



SET UP
INSTRUCTION
4 SCREEN CLASSIC

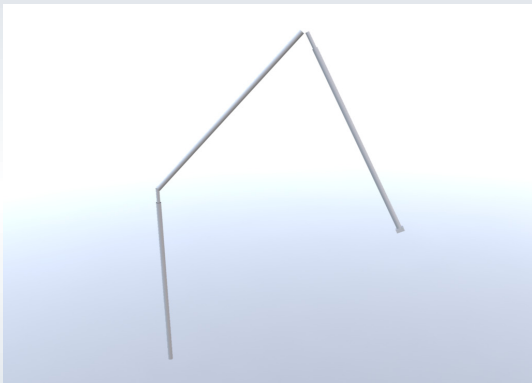


1



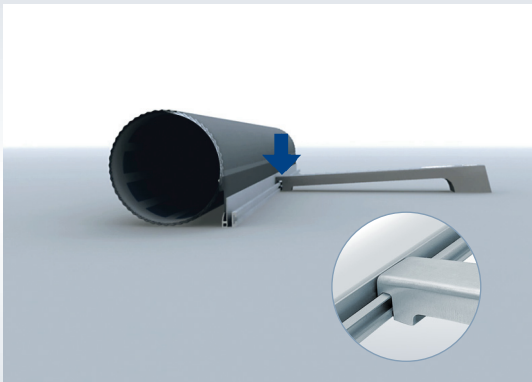
Take out the graphic panel, foot and supporting rod from the bag.

2



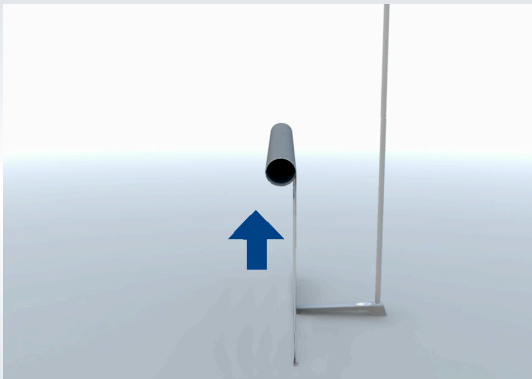
Unfold the 3-part supporting rod. Make sure that the parts click in each other.

3



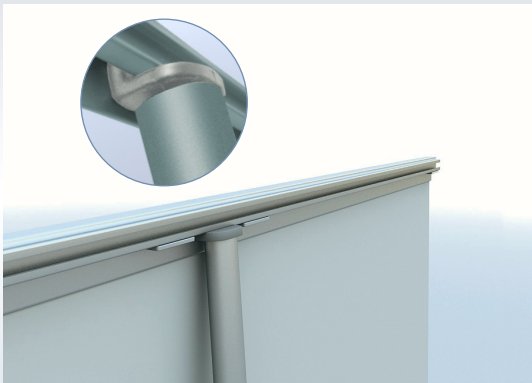
Attach the stabilizing foot to the lower panel profile.

4



Take hold of the graphic panel and roll up. Place the supporting rod into circle cap on the stabilizing foot.

5



Attach the top profile to the top fastener of the supporting rod.

6



Place the system at the desired location and verify that the system is stable.

ACCESSORIES



Options include a lightweight and convenient low voltage spotlight in an attractive design.



Attach the spotlight on the top profile.



**WE ARE CONSTANTLY DEVELOPING
AND IMPROVING OUR PRODUCTS!**

Further details about us, our assortment, new innovations, instructions and retailers etc. are available on our website www.expolinc.com.

expolinc
Opportunities on display